



# Rail UEX - UES

## Slider CEXU - CESU

Version in stainless steel and  
zinc-plated steel



[www.rollon.com](http://www.rollon.com)

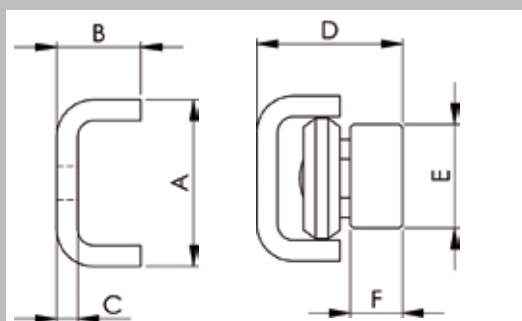
**ROLLON**<sup>®</sup>  
Linear Evolution



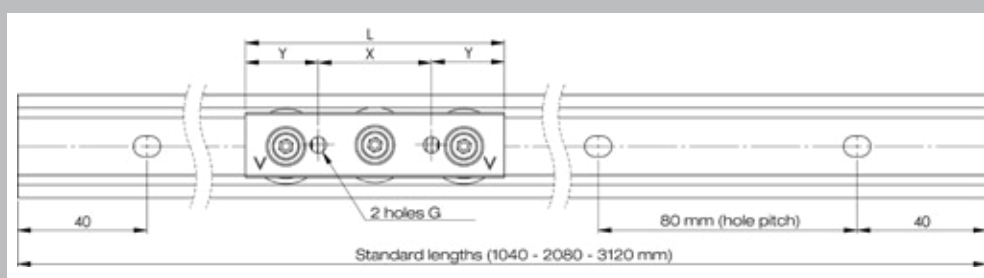
## Technical features:

- ⇒ Resolve existing misalignment issues
- ⇒ Rails with flat raceways “U”, to combine with rails with C-shaped raceways (TEX-TES) offering lateral freedom to the slider, indispensable to solve axial parallelism errors
- ⇒ Material: AISI 316L stainless steel (UEX) and zinc plated steel (UES)
- ⇒ 3 sizes available (20, 30 and 45 mm)
- ⇒ Max. radial load capacity up to 1.740 N
- ⇒ Version in stainless steel corrosion resistant even after scratching, etching and chipping
- ⇒ 3 radial ball bearings with double rubber seals (2RS) are lubricated for life
- ⇒ Can be used in washdowns
- ⇒ Ecological and recyclable materials

Type	dimension in mm									
	A	B	C	D	E	F	L	X	Y	G
UEX-20 – CEXU20 UES-20 – CESU20	20,5	11	3	18,3 ± 0,6	10	6	60	20	20	M5
UEX-30 – CEXU30 UES-30 – CESU30	31,8	16	4	28,0 ± 1,0	20	10	80	35	22,5	M6
UEX-45 – CEXU45 UES-45 – CESU45	44,8	24,5	4,5	37,3 ± 1,75	25	12	120	55	32,5	M8



Type	C0rad [N]
UEX-20 – CEXU20	300
UEX-30 – CEXU30	800
UEX-45 – CEXU45	1600
UES-20 – CESU20	326
UES-30 – CESU30	870
UES-45 – CESU45	1740



Special lengths are available upon special order. Fixing screws (suggested): hexagon socket oval head screws ISO 7380. Upon request special TORX® screws.

IT-91UK (printed: 10/08)

**ROLLON S.r.l.**

Via Trieste 26  
20059 Vimercate (MI)  
Phone: (+39) 039 62591  
Fax : (+39) 039 6259206  
e-mail: [infocom@rollon.it](mailto:infocom@rollon.it)  
[www.rollon.com](http://www.rollon.com)

**ROLLON®**  
LineaREvolution